

Carver County Plat Manual Addendum

Plats prepared under Minnesota Statutes Chapter 505, 508 and 508A are to generally follow the guidelines of the 2009 edition of the Manual of Guidelines for Platting in Minnesota. A copy of the manual may be obtained from the Minnesota Society of Professional Surveyors.

Plats prepared under Minnesota Statutes Chapter 515B are to generally follow the guidelines of the 2015 edition of the Common Interest Community (CIC) Plat Manual of Minimum Guidelines. A copy of the manual may be obtained from the Minnesota Society of Professional Surveyors.

In addition to the plat manual guidelines and statutory requirements, Carver County requires the use of the following certification language for the County Surveyor, Auditor, Recorder and Registrar of Titles.

County Surveyor, Carver County, Minnesota

Pursuant to Chapter 395, Minnesota Laws of 1971, this plat has been approved this _____ day of _____, 20____.

Brian E. Praske, County Surveyor

By: _____

County Auditor, Carver County, Minnesota

I hereby certify that taxes payable in _____ and prior years have been paid for land described on this plat. Dated this _____ day of _____, 20____.

Crystal Campos, County Auditor

By: _____

County Recorder, Carver County, Minnesota

I hereby certify that this plat of (PLAT NAME) was filed this _____ day of _____, 20____, at _____ o'clock ____ M. as Document No. _____.

Kaaren Lewis, County Recorder

By: _____

Registrar of Titles, Carver County, Minnesota

I hereby certify that this plat of (PLAT NAME) was filed this _____ day of _____, 20____, at _____ o'clock ____ M. as Document No. _____.

Kaaren Lewis, Registrar of Titles

By: _____

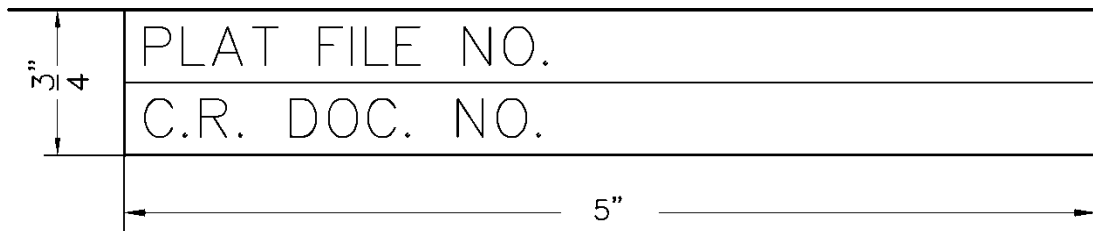
Note: For CIC plats, replace the above County Recorder and/or Registrar of Titles certification with a recording box as described in the 2015 edition of the Common Interest Community (CIC) Plat Manual of Minimum Guidelines. See below.

Recording Document Box

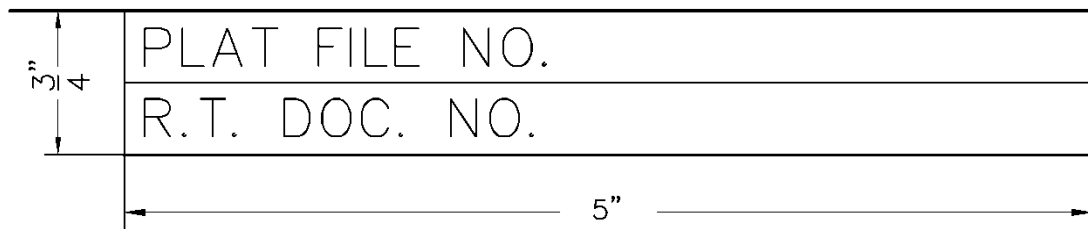
Place a box for file and document numbers within the border in the upper right hand corner of each plat sheet as shown below.

Samples:

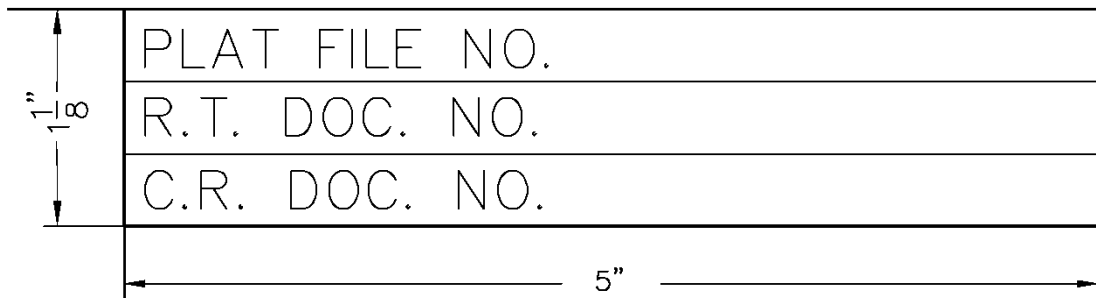
ABSTRACT PLAT



TORRENS PLAT



TORRENS and ABSTRACT PLAT



For CIC plats, include on all sheets the appropriate recording document box shown above. On the first sheet of a CIC plat, include a recording box as described in 2015 edition of the Common Interest Community (CIC) Plat Manual of Minimum Guidelines in addition to the recording document box shown above.

ABSTRACT CIC PLAT

PLAT FILE NO.
C.R. DOC. NO.
This CIC Plat is part of the Declaration recorded as Document No. _____ on this ____ day of _____, 2____.
_____ Kaaren Lewis, Carver County Recorder

Make appropriate modifications as required for Torrens, Torrens/Abstract, Supplemental CIC plats, and Amended CIC Plats.

For all other questions regarding the preparation of plats for recording, refer to M.S. Chapters 505 or 515B or contact Brian Praske at 952-466-5268 or Luke Kranz at 952-361-1024.

Carver County Surveying and Mapping
600 East Fourth Street
Chaska, MN 55318
952-361-1015

Rev. 12/30/2019